



- ▶ Version 10.1
- ▶ Development Tools
- ▶ Event Viewer

Event Viewer - Introduction

The Event Viewer can be used to monitor events on Dyalog GUI objects.

To display the Event Viewer, select Spy from the Session Tools menu.

You can choose:

- which types of events you want to monitor
- which objects you want to monitor

Event Viewer						
Spy Columns Select Options						
Object	EventName	Parameters	Action	NQed	EventID	
#.F	GotFocus		0	0	573	
#.F	MouseUp	59.66101837 26.94444466 1 0	0	0	574	
#.F	MouseUp	18.9830513 29.16666603 1 0	0	0	575	
#.F	MouseDownClick	18.9830513 29.16666603 1 0	0	0	576	
#.F	MouseUp	18.9830513 29.16666603 1 0	0	0	577	
#.F	Configure	42.578125 35.546875 38.41145706 3...	#.FOO	0	578	
#.F	Configure	42.70833206 36.03515625 38.41145...	#.FOO	0	580	
#.F	Configure	43.48958206 37.5 38.41145706 35.1...	#.FOO	0	582	
#.F	Configure	44.79166794 40.13671875 38.41145...	#.FOO	0	584	
#.F	Configure	46.09375 42.48046875 38.41145706 ...	#.FOO	0	586	
#.F	Configure	46.484375 43.65234375 38.4114570...	#.FOO	0	588	
#.F	Configure	46.484375 43.65234375 38.4114570...	#.FOO	0	590	
#.F	Configure	46.484375 43.65234375 38.4114570...	#.FOO	0	592	
#.F	LostFocus		0	0	594	

In the example illustrated above, the user has chosen to monitor events on a Form `#.F`. Furthermore, the user has chosen to monitor GotFocus, LostFocus, MouseUp, MouseDbiClick and Configure events. Notice that there is a callback `#.FOO` attached to the Configure event.

Spy Menu

The Spy menu provides the following options and actions.

Dyalog Ltd
 South Barn
 Minchens Court
 Minchens Lane
 Bramley
 Hampshire
 RG26 5BH
 United Kingdom

Phone:

+ 44 (0) 1256 830 030

Fax:

+ 44 (0) 1256 830 031

e-mail:

sales@dyalog.com



- ▶ Version 10.1
- ▶ Development Tools
- ▶ Event Viewer

Menu Item	Description
Close	Closes the Event Viewer
Clear	Clears all of the event information that is currently displayed in the Event Viewer.
All	In this mode all the events are displayed in the Event Viewer as they occur, whether or not there is an action associated with them.
As Queued	In this mode only events that have associated actions are displayed in the event viewer.
SnapShot	In this mode the Event Viewer displays a snapshot of the internal event queue. Only those events that are currently in the internal APL event queue waiting to be processed are displayed.
Stop Logging	When checked, this item switches event logging off.

Columns Menu

The Columns menu allows you to choose which information is displayed for the events you are monitoring.

Menu Item	Description
Object	If checked, this item displays the name of the object on which the event occurred.
Event Name	If checked, this item displays the name of the event that occurred.
Event Number	If checked, this item displays the event number of the event that occurred.
Parameters	If checked, this item displays the parameters for the event that occurred. These are the items that would be passed in the argument to a callback function.
Action	If checked, this item displays the action associated with the event. This could be 0, 1, $\bar{1}$, the name of a callback function, or an expression to be executed.
Thread ID	If checked, this item displays the thread id of the thread in which the event occurred
Nqed	If checked, this item displays 0 or 1 according to whether or not the event occurred naturally or was generated programmatically by <code>□NQ</code> .
Event ID	If checked, this item displays the event id of the event that occurred. This id is used internally.

Dyalog Ltd

South Barn
Minchens Court
Minchens Lane
Bramley
Hampshire
RG26 5BH
United Kingdom

Phone:

+ 44 (0) 1256 830 030

Fax:

+ 44 (0) 1256 830 031

e-mail:

sales@dyalog.com



- Version 10.1
- Development Tools
- Event Viewer

Select Menu

The Select menu allows you to highlight certain events in the Event Viewer. For example, if you are monitoring TCP/IP events on a number of TCPSockets, you can highlight just the events for a particular socket.

Menu Item	Description
Select Matching Events	Highlights all the events that have the same Object and Event Name (or Event Number) as the currently selected event.
Select All Events On This Object	Highlights all the events that have the same Object as the currently selected event.
Select All Events Of This Type	Highlights all the events that have the same Event Name (or Event Number) as the currently selected event.

These items are also available from the pop-up menu that appears when you press the right mouse button over an event displayed in the Event Viewer window.

Event Viewer Options Menu

The Options menu allows you to choose which information is displayed for the events you are monitoring.

Menu Item	Description
Always on Top	If checked, this item causes the Event Viewer window to be displayed above all other windows (including other application windows).
Use APL font	If checked, this item causes the information displayed in the Event Viewer window to be displayed using the APL font (the same font as is used in the Session window itself). If not, the system uses the appropriate Windows font.
Settings...	Displays the Event Viewer Options Dialog Box.

Dyalog Ltd
 South Barn
 Minchens Court
 Minchens Lane
 Bramley
 Hampshire
 RG26 5BH
 United Kingdom

Phone:
 + 44 (0) 1256 830 030

Fax:
 + 44 (0) 1256 830 031

e-mail:
 sales@dyalog.com



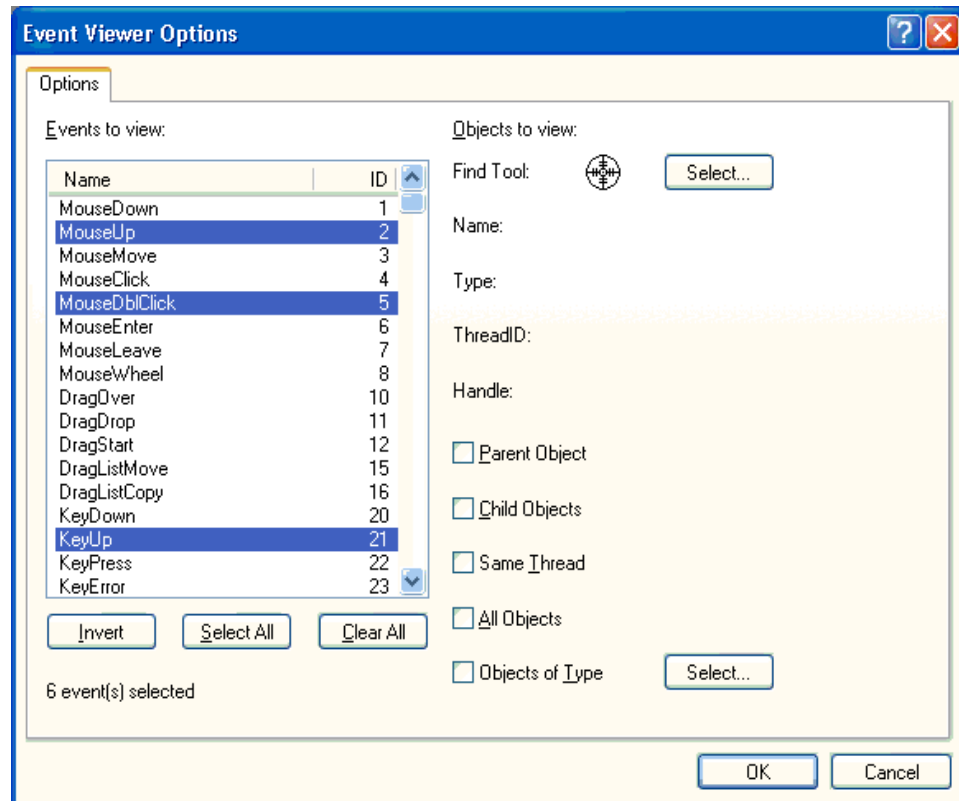
Version 10.1

Development Tools

Event Viewer

Event Viewer Options Dialog Box

The Event Viewer Options dialog box allows you to select the objects and events that you wish to monitor.



Events to view

The list box shows all the events that are support by the Dyalog GUI and allows you to select which events are to be monitored. Only those events that are selected will be reported.

Dyalog Ltd

South Barn
Minchens Court
Minchens Lane
Bramley
Hampshire
RG26 5BH
United Kingdom

Phone:

+ 44 (0) 1256 830 030

Fax:

+ 44 (0) 1256 830 031

e-mail:

sales@dyalog.com



- ▶ **Version 10.1**
- ▶ **Development Tools**
- ▶ **Event Viewer**

Objects to view

Item	Description
All Objects	If checked, this item enables event reporting on all Dyalog GUI objects.
Objects of Type	If checked, this item activates the adjoining Select button and disables all other Object selection mechanisms. Clicking the Select button brings up a dialog box that allows you to choose which types of Dyalog GUI objects you want to monitor.
Find Tool	This tool allows you to choose a single specific Dyalog GUI object that you want to monitor. To use it, drag the Find Tool and move it over your Dyalog GUI objects. As you drag it, the individual objects are highlighted and their details displayed in the Name, Type, Thread ID and Handle fields. Drop the Find Tool on the object of your choice.
Select	Clicking this button brings up a dialog box that displays the entire Dyalog GUI structure as a tree view. You can choose a single object by selecting it.

Dyalog Ltd

South Barn
 Minchens Court
 Minchens Lane
 Bramley
 Hampshire
 RG26 5BH
 United Kingdom

Phone:

+ 44 (0) 1256 830 030

Fax:

+ 44 (0) 1256 830 031

e-mail:

sales@dyalog.com