



- ▶ Version 10.1
- ▶ Development Tools
- ▶ Improved Tracer

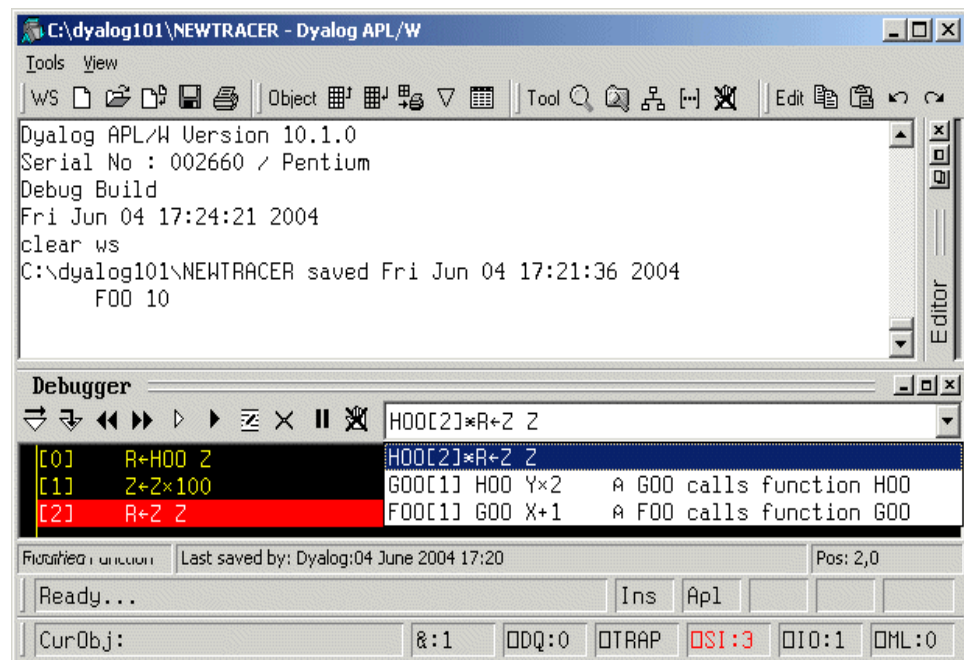
### Tracer Enhancements

The Tracer has been enhanced in a number of ways, primarily to improve the debugging of threads.

The first thing that you will notice is that the Trace Tools window is no longer provided as a separate window. Instead, the Trace Tools are displayed horizontally in the title bar of the Trace window itself.

If you are using free-floating Trace Windows, this means that the Trace Tools are conveniently available in every window. A second advantage is that input focus problems arising from having the Trace Tools displayed in a separate window are avoided.

Alongside the Trace Tools is a new drop-down combo box that displays the current SI stack. The old SI Stack window is still provided, but if you want to save some screen space, the new combo box provides the same information in a more compact form.



**Dyalog Ltd**  
 South Barn  
 Minchens Court  
 Minchens Lane  
 Bramley  
 Hampshire  
 RG26 5BH  
 United Kingdom

**Phone:**  
 + 44 (0) 1256 830 030

**Fax:**  
 + 44 (0) 1256 830 031

**e-mail:**  
 sales@dyalog.com

Pressing Ctrl+Shift+Bksp (BK), or clicking the Back button in the Trace Tools, causes the current line to move back from line 0 to the last line in the function.

In previous versions of Dyalog, this action was ignored.