



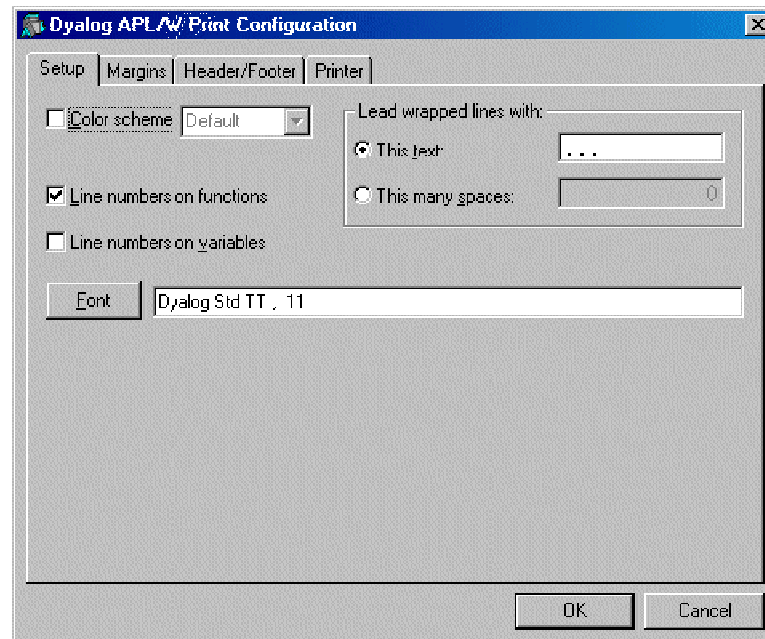
- ▶ The Development Environment
- ▶ Colour Printing

Colour Printing

Functions and variables may be printed in **colour** from the *Session File* menu, from the function editor and Workspace Explorer. Print settings are accessed from the *Print Setup* menu item on the *File* menu of the Session window, Edit windows and the Workspace Explorer.

There are four separate tabs; **Setup, Margins, Header/Footer, Printer.**

Setup



Colour Scheme

If you want to print functions with syntax colouring, check this box and select the name of the colour scheme to be used. Note that printing in colour is slower than printing without colour.

Lead wrapped lines

Lines in functions that exceed the width of the paper wrap onto the next line. If you wish to prefix wrapped lines with a particular text string, check *This text* button and enter the text you require. If you wish to prefix wrapped lines with spaces, check *This many spaces*, and enter the number you require.

Line number on functions

Check this box if you want line numbers to be printed in defined functions.

Line number on variables

Check this box if you want line numbers to be printed in variables. If you choose this option, line numbering starts at `⎕LO`.

Font

Click to select the font to be used for printing. Note that only fixed-pitch fonts are support; if you choose a variable pitch font, you get what you get!

Dyalog Ltd
 South Barn
 Minchens Court
 Minchens Lane
 Bramley
 Hampshire
 RG26 5BH
 United Kingdom

Phone:
 + 44 (0) 1256 830 030

Fax:
 + 44 (0) 1256 830 031

e-mail:
 sales@dyalog.com



- ▶ The Development Environment
- ▶ Colour Printing

Colour printing - Margins

Dyalog APL/W: Print Configuration

Setup | **Margins** | Header/Footer | Printer

Use margins

Left margin: Units: Inches Centimetres

Right margin:

Top margin:

Bottom margin:

OK Cancel

Use margins

Check this box if you want any margins between the edge of the paper and your printed output.

Left/Right/Top/Bottom margin

Enter the amount of space for the margin

Units

Choose either *Inches* or *Centimetres*

Dyalog Ltd

South Barn
Minchens Court
Minchens Lane
Bramley
Hampshire
RG26 5BH
United Kingdom

Phone:

+ 44 (0) 1256 830 030

Fax:

+ 44 (0) 1256 830 031

e-mail:

sales@dyalog.com



- ▶ The Development Environment
- ▶ Colour Printing

Colour Printing – Header/Footer

Header

Check this box if you want a heading to be written at the top of each page of output.

Footer

Check this box if you want a footer to be written at the bottom of each page of output.

Prefix functions with

Check this box if you want a separate header to be printed before every defined function

Prefix variables with

Check this box if you want a separate header to be printed before every variable

Prefix other objects with

Check this box if you want a separate header to be printed before every object that is neither a defined function nor a variable. Other objects include locked functions, external functions, [PLA](#) functions, derived functions and namespaces.

Dyalog Ltd

South Barn
Minchens Court
Minchens Lane
Bramley
Hampshire
RG26 5BH
United Kingdom

Phone:

+ 44 (0) 1256 830 030

Fax:

+ 44 (0) 1256 830 031

e-mail:

sales@dyalog.com



▶ The Development Environment

▶ Colour Printing

Colour Printing – Header/Footer

The specification for headers and footers may include a mixture of your own text, and keywords which are enclosed in braces, e.g. {objname}. Keywords act like variables and are replaced at print time by corresponding values.

Any of the following fields may be included in headers, footers and separators.

{WSName}	{WS}	Workspace name
{NSName}	{NS}	Namespace name
{ObjName}	{OB}	Object name
{Author}	{AU}	Author
{FixDate}	{FD}	Date function was last fixed
{FixTime}	{FT}	Time function was fixed
{PrintDate}	{PD}	Today's date
{PrintTime}	{PT}	Current time
{CurrentPage}	{CP}	Current page number
{TotalPages}	{TP}	Total number of pages
{RightJustify}	{RJ}	Right-justifies subsequent text/fields
{HorizontalLine}	{HL}	Inserts a horizontal line
{CarriageReturn}	{CR}	Inserts a new-line

For example, the specification :

```
Workspace: {wsname} {objname} {rj} Printed {PrintTime}
{PrintDate}
```

would cause the following header, footer or separator to be printed at the appropriate position in each page of output:

```
Workspace: U:\WS\WDESIGN WIZ_change_toolbar Printed 1
4:40:11 02 March 1998
```

Dyalog Ltd

South Barn
Minchens Court
Minchens Lane
Bramley
Hampshire
RG26 5BH
United Kingdom

Phone:

+ 44 (0) 1256 830 030

Fax:

+ 44 (0) 1256 830 031

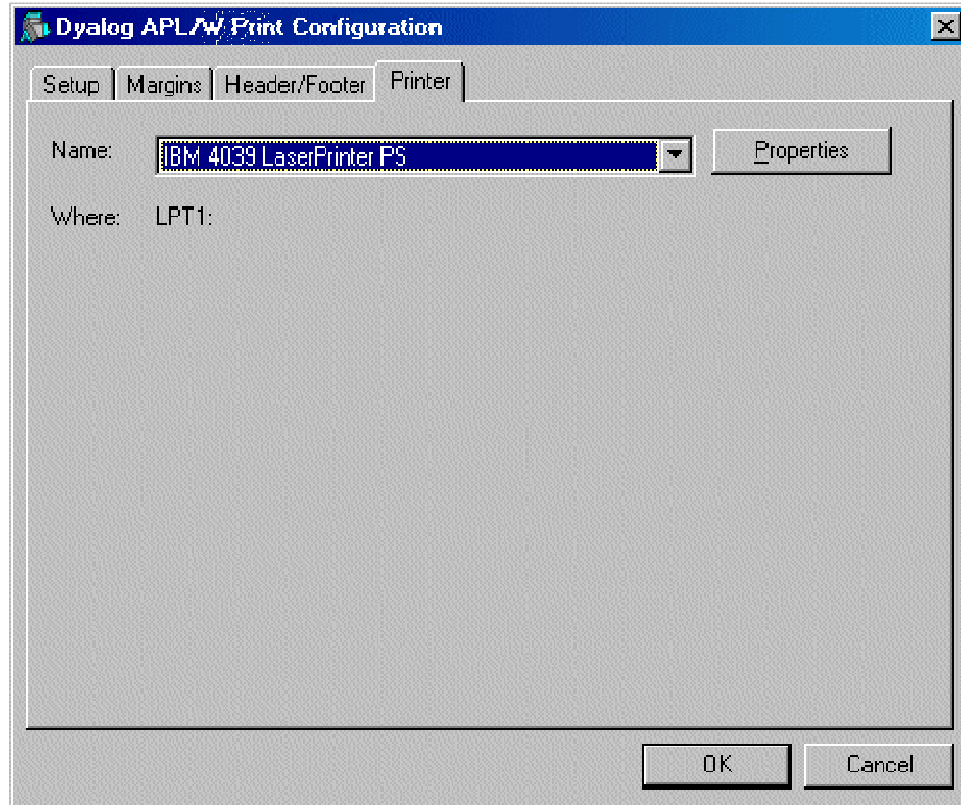
e-mail:

sales@dyalog.com



- ▶ The Development Environment
- ▶ Colour Printing

Colour Printing - Printer



Name

Select the printer you wish to use. Dyalog APL will remember your choice.

Properties

Click to configure the selected printer.

Where

Reports the printer device

Colour Scheme

If you want to print functions with syntax colouring, check this box and select the name of the colour scheme to be used. Note that printing in colour is slower than printing without colour.

Lead wrapped lines

Lines in functions that exceed the width of the paper wrap onto the next line. If you wish to prefix wrapped lines with a particular text string, check *This text* button and enter the text you require. If you wish to prefix wrapped lines with spaces, check *This many spaces*, and enter the number you require.

Dyalog Ltd

South Barn
Minchens Court
Minchens Lane
Bramley
Hampshire
RG26 5BH
United Kingdom

Phone:

+ 44 (0) 1256 830 030

Fax:

+ 44 (0) 1256 830 031

e-mail:

sales@dyalog.com



- > The Development Environment
- > Colour Printing

Colour Printing - Printer

Line number on functions

Check this box if you want line numbers to be printed in defined functions.

Line number on variables

Check this box if you want line numbers to be printed in variables. If you choose this option, line numbering starts at `10`.

Font

Click to select the font to be used for printing. Note that only fixed-pitch fonts are supported; if you choose a variable pitch font, you get what you get!

Dyalog Ltd

South Barn
Minchens Court
Minchens Lane
Bramley
Hampshire
RG26 5BH
United Kingdom

Phone:

+ 44 (0) 1256 830 030

Fax:

+ 44 (0) 1256 830 031

e-mail:

sales@dyalog.com