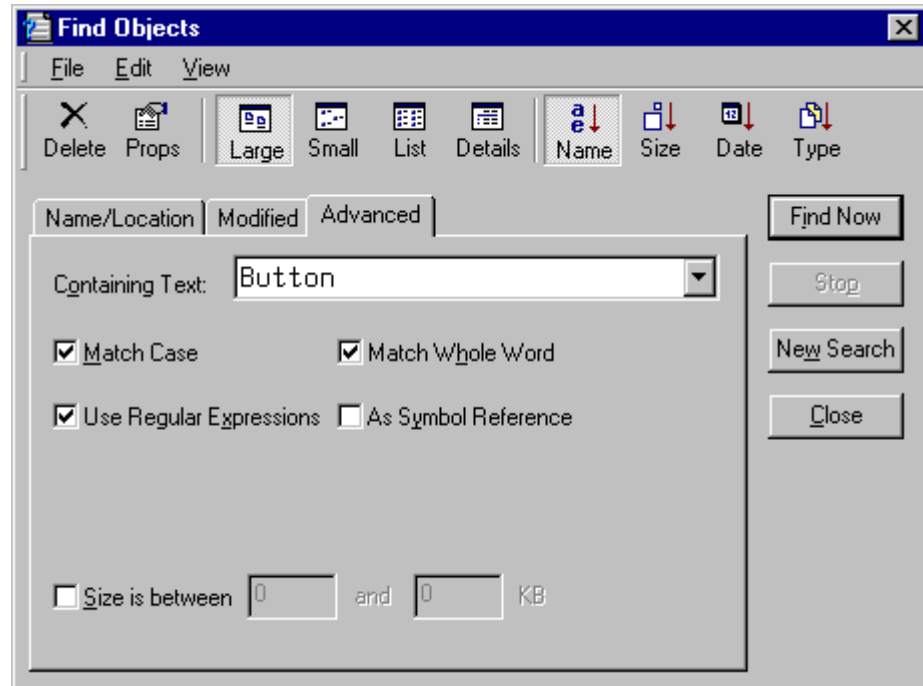




- ▶ The Development Environment
- ▶ Find Objects Tool

The Find Objects Tool

The Find Objects tool is a sophisticated search tool for locating objects in the workspace.



The first page is used to locate objects by name and/or type, and lets you specify where to look. The second page is used to locate objects which have been modified by a particular user and/or in a given time period. The final page locates objects that contain a particular text string with various powerful options. All these sets of criteria can be combined together to make as sophisticated a search as you require.

Objects located by this tool are displayed in a sub-window, just as they are in the explorer tool, and can be manipulated (edited, deleted, moved, copied and so forth) in exactly the same way.

Dyalog Ltd
 South Barn
 Minchens Court
 Minchens Lane
 Bramley
 Hampshire
 RG26 5BH
 United Kingdom

Phone:
 + 44 (0) 1256 830 030

Fax:
 + 44 (0) 1256 830 031

e-mail:
 sales@dyalog.com