

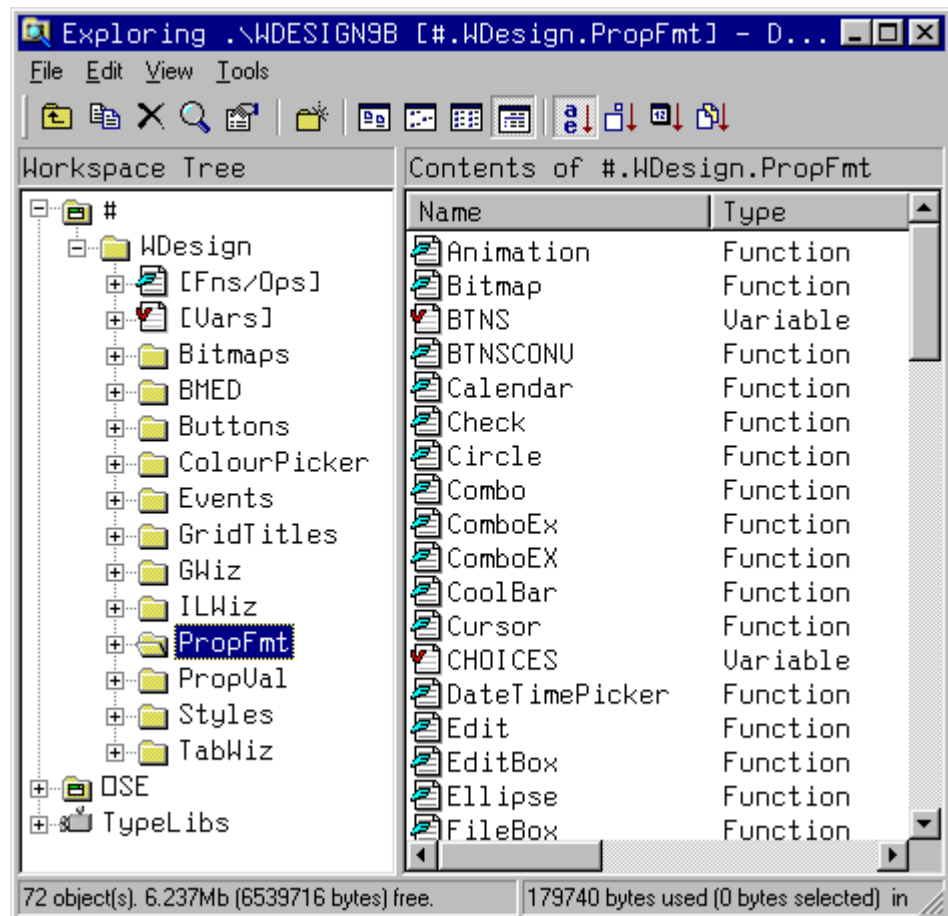


- ▶ The Development Environment
- ▶ Workspace Explorer

The Workspace Explorer

The workspace explorer is a visual tool for browsing and managing the objects in your workspace. It is closely modelled on the Windows Explorer and the facilities it provides are similar in many ways.

The workspace explorer displays two sub-windows. The first shows the structure of your workspace, i.e. the namespace hierarchy, in whatever level of detail you require. The second sub-window displays the contents (functions, variables, operators and sub-namespaces) of a particular namespace.



Objects may be displayed and sorted in various different ways. In the details view, the information includes each object's size, a description, and for functions and operators, the time it was last modified and the user who saved it.

The explorer let's you quickly locate an object, view its properties, edit it, delete it, rename it, and to copy or move it to another namespace using drag and drop.

Dyalog Ltd

South Barn
Minchens Court
Minchens Lane
Bramley
Hampshire
RG26 5BH
United Kingdom

Phone:

+ 44 (0) 1256 830 030

Fax:

+ 44 (0) 1256 830 031

e-mail:

sales@dyalog.com

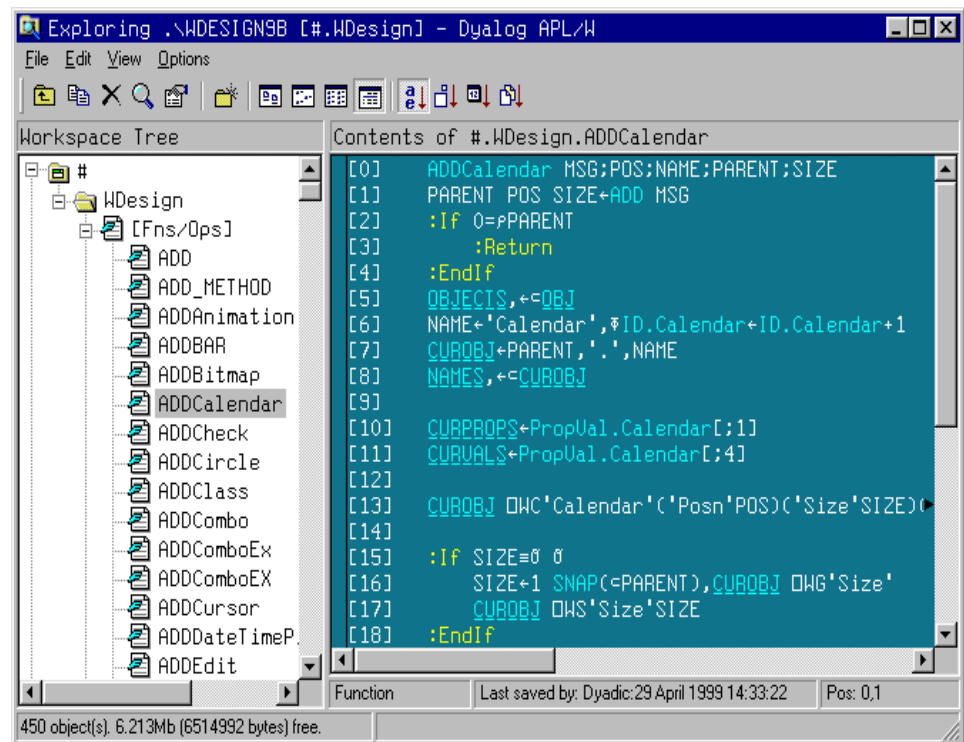


- ▶ The Development Environment
- ▶ Workspace Explorer

The Workspace Explorer

Namespaces allow you to partition monolithic workspaces into smaller, self-contained sub-systems. The explorer helps you to manage them. Once you have used it you will never want to type system commands again!

The Workspace Explorer also supports *in-situ* editing. If you open the Fns/Ops item, the names of the functions and operators contained in the namespace are displayed below it alphabetically. If you select one of these names, the function itself is opened up for editing in the right-hand pane. You can quickly cycle through the functions (or variables) in a namespace, pressing cursor up and cursor down in the left pane to move from one to another.



Dyalog Ltd
 South Barn
 Minchens Court
 Minchens Lane
 Bramley
 Hampshire
 RG26 5BH
 United Kingdom

Phone:
 + 44 (0) 1256 830 030

Fax:
 + 44 (0) 1256 830 031

e-mail:
 sales@dyalog.com

Browsing COM Objects

This facility allows you to browse Type Libraries associated with OLE Servers (and other COM objects) that are installed on your computer or loaded in the workspace.

It allows you to explore the COM objects installed on your computer, load their Type Libraries into the workspace, and browse the Properties, Methods and Events provided by these objects.